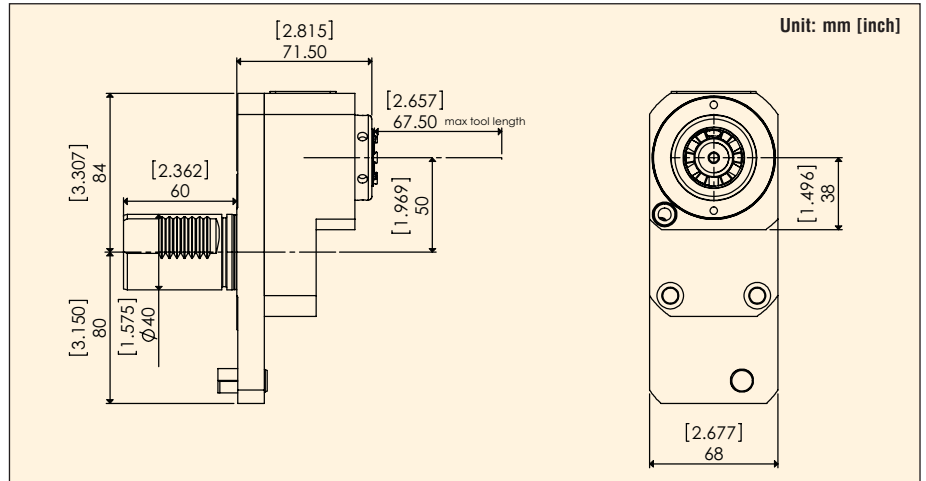
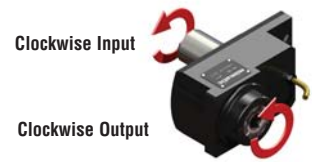


Offset Type

Part #: MZQT46-ER25X-OFF-HS

Mimatic Part #(old): 05.0412.7841.404
Mimatic Part #(new): 124068



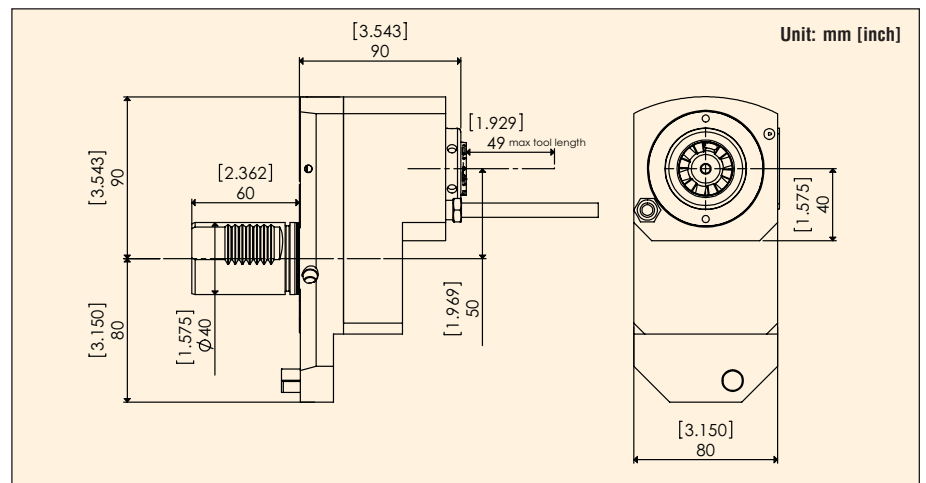
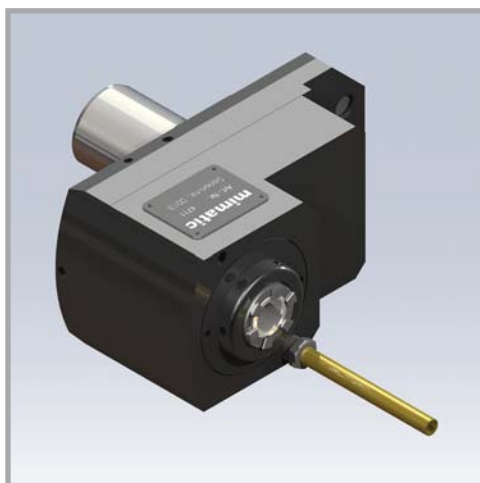
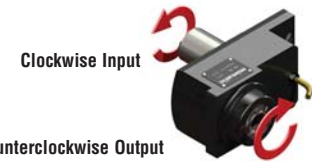
Collet Size	Clamping Range	Max. Torque	Input/Output RPM (Max.)	Gear Ratio	Input/Output Rotation	Coolant	Spindle Wrench	Nut Wrench
ER25	0.5-16 mm	25 Nm	6500/13000	1:2	CW-CW	External	107446	112913

Please refer to pages 44 - 47 for ER Series Collets and ER Tap Collets details.

Offset Type

Part #: MZQT46-ER25X-OFF-HSC

Mimatic Part #(old): 05.0612.7841.404
Mimatic Part #(new): 124345



Collet Size	Clamping Range	Max. Torque	Input/Output RPM (Max.)	Gear Ratio	Input/Output Rotation	Coolant	Spindle Wrench	Nut Wrench
ER25	0.5-16mm	25 Nm	6500/13000	1:2	CW-CCW	Internal (1000 PSI)	107446	112913

Please refer to pages 44 - 47 for ER Series Collets and ER Tap Collets details. Internal coolant tools must not be run dry.